



# Antennas

DATA SHEET

Bi-Sector™ Antenna

BSA-M65R-DU-H6



Overview

- Patented twin asymmetric beam 33° Bi-Sector™ array phased arrays over a frequency range of (790-960 MHz) and (1710-2360 MHz), optimized to match existing cloverleaf (65°) deployments.
- 4 low band and 4 high band ports.
- Single panel design supporting 2 beams.
- Optimized beam shape for maximum LTE data throughput. Independent low-band and high-band remote electrical tilt for each beam provides unmatched optimization flexibility.
- 3GPP/AISG 2.0 compliant.
- Daisy chaining capability.
- Software upgradeable.
- Rugged, weather resistant and highly reliable internal design.

The CCI Multi-Band Bi-Sector™ Antenna is an LTE optimized phased array that provides a total of four low band ports covering the 800 MHz thru 900 MHz bands and four high band ports covering the DCS 1800 and UMTS 2100 bands in a single, compact enclosure. Our patented bi-sector technology enables the creation of two asymmetric 33° beams, each containing two low band and two high band ports. The antenna is capable of 2x2 MIMO in both low and high bands. The beam shapes have been optimized for minimum overlap and crossover in order to minimize interference across sectors and lower soft handover losses. As such, the antenna array enables maximized data throughput for EVDO, UMTS and LTE networks.

The remote electrical tilt (RET) Series Multi-Band Bi-Sector™ Antenna enables operators to remotely control the electrical down-tilt of the antenna in the field with sealed AISG compliant RET actuators. The CCI RET system is designed to meet the reliability, flexibility and efficiency requirements in a wide range of environments. The RET actuators are fully AISG compliant, software upgradeable, daisy chaining capable and fully weather resistant. The remote electrical capability allows independent adjustment of the low band ports and high band ports of each sub-beam for easier optimization. This antenna is also available as a variable electrical tilt (VET) model.

The single panel design of the antenna array offers the opportunity to reduce antenna count and directly replaces the footprint of an existing 65° antenna. The new coverage that matches the existing footprint minimizes the need for optimization and adjacent site changes, and allows for significant CAPEX and OPEX cost savings.

CCI antennas are designed and produced to ISO 9001 certification standards for reliability and quality in our state-of-the-art manufacturing facilities.

Applications

- Upgrade of data-throughput or capacity constrained sites.
- Spectrum limited markets.
- Deferral of new site builds or carrier adds.



# Antennas

## Bi-Sector™ Antenna

BSA-M65R-DU-H6

### SPECIFICATIONS

#### Electrical

Ports	4 x Low Band Ports for 790-960 MHz		4 x High Band Ports for 1710-2360 MHz		
Frequency Range	790-862 MHz	880-960 MHz	1710-1880 MHz	1920-2170 MHz	2300-2360 MHz
Gain	17.1 dBi	17.5 dBi	17.5 dBi	18.4 dBi	18.5 dBi
Azimuth Beamwidth (-3dB)	32°	30°	32°	29°	25°
Elevation Beamwidth (-3dB)	10.8°	9.7°	6.9°	6.0°	5.5°
Electrical Downtilt	2° to 12°	2° to 12°	0° to 9°	0° to 9°	0° to 9°
Elevation Sidelobes (1st Upper)	< -18 dB	< -18 dB	< -18 dB	< -18 dB	< -18 dB
Front-to-Back Ratio @180°	> 30 dB	> 30 dB	> 30 dB	> 30 dB	> 30 dB
Front-to-Back Ratio over ± 20°	> 30 dB	> 30 dB	> 30 dB	> 30 dB	> 28 dB
Cross-Polar Port-to-Port Isolation	> 25 dB	> 25 dB	> 25 dB	> 25 dB	> 25 dB
Voltage Standing Wave Ratio(VSWR)	< 1.5:1	< 1.5:1	< 1.5:1	< 1.5:1	< 1.5:1
Passive Intermodulation (2x20W)	≤ -150 dBc	≤ -150 dBc	≤ -150 dBc	≤ -150 dBc	≤ -150 dBc
Input Power Continuous Wave (CW)	500 watts	500 watts	300 watts	300 watts	300 watts
Polarization	Dual Linear 45°	Dual Linear 45°	Dual Linear 45°	Dual Linear 45°	Dual Linear 45°
Input Impedance	50 ohms	50 ohms	50 ohms	50 ohms	50 ohms
Lightning Protection	DC Ground	DC Ground	DC Ground	DC Ground	DC Ground

#### Mechanical

Dimensions (LxWxD)	72.0x28.5x9.7 in (1828x723x245 mm)
Survival Wind Speed	> 150 mph (> 240 kph)
Front Wind Load	438 lbs (1947N) @ 100 mph (161 kph)
Side Wind Load	175 lbs (778N) @ 100 mph (161 kph)
Equivalent Flat Plate Area	17.1 ft² (1.6 m²)
Weight *	96.3 lbs (43.7 kg)
RET System Weight	6.6 lbs (3.0 kg)
Connector	8 x 7-16 DIN female long neck
Mounting Pole	2 to 5 in (5 to 12 cm)

\* Weight excludes mounting and RET



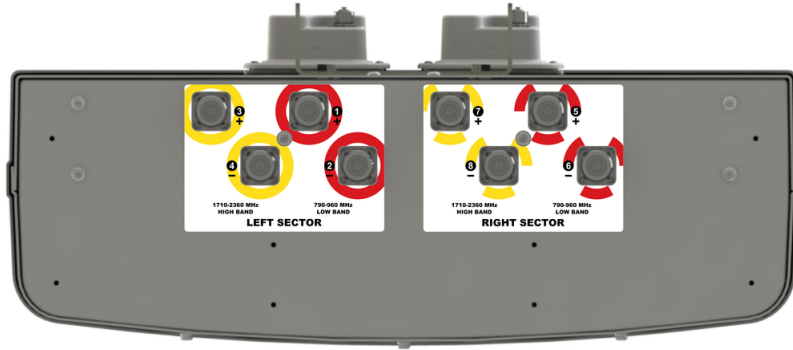
# Antennas

## Bi-Sector™ Antenna

BSA-M65R-DU-H6

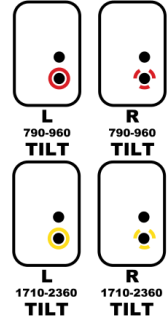
### SPECIFICATIONS

Bottom View



RET Connection Diagram

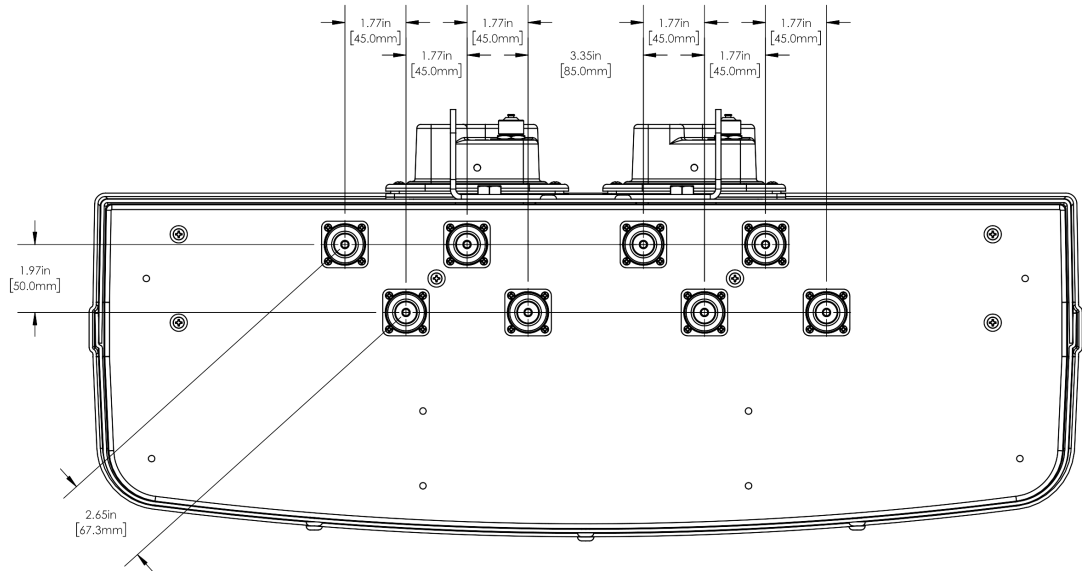
**CONNECT RET ACTUATORS AS SHOWN BELOW**



61-000414-01

### Mechanical

Connector Spacing





# Antennas

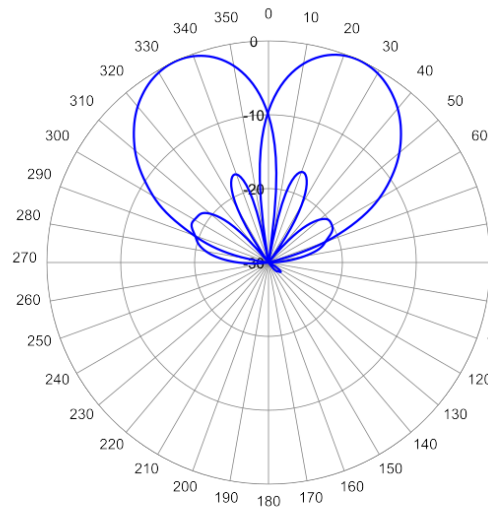
## SPECIFICATIONS

### Bi-Sector™ Antenna

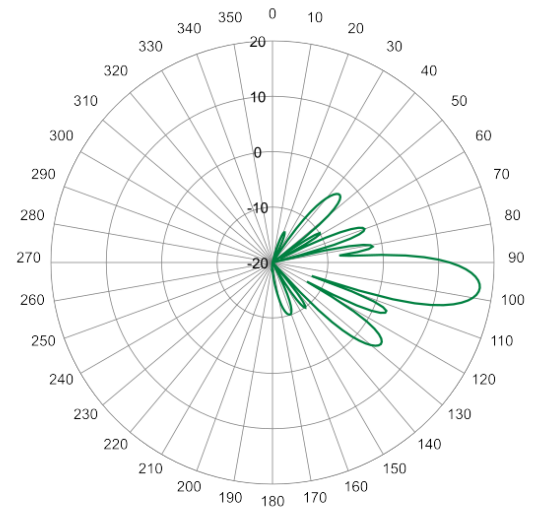
BSA-M65R-DU-H6

#### Typical Antenna Patterns

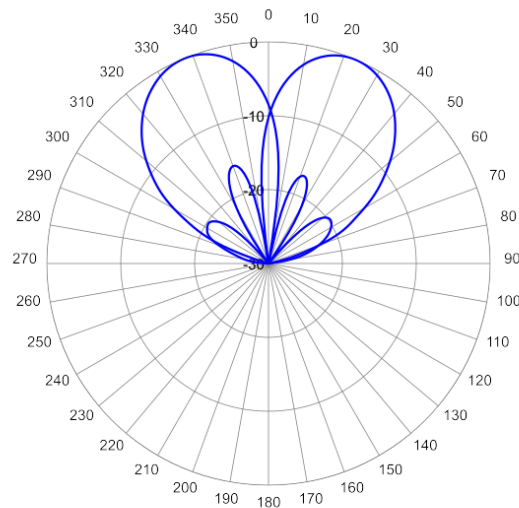
For detailed information on additional antenna patterns, contact customer support at [support@cciproducts.com](mailto:support@cciproducts.com)



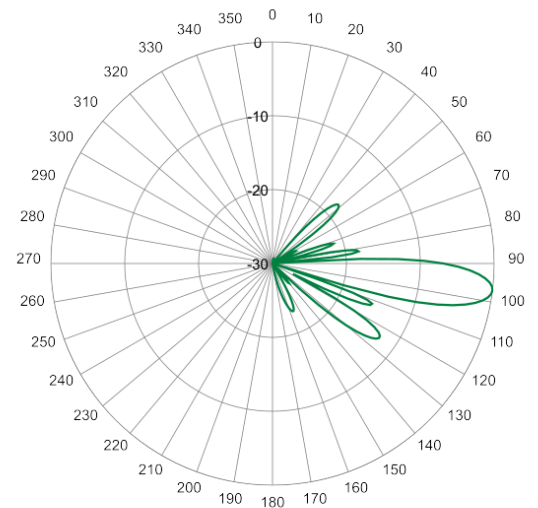
849 MHz Azimuth



849 MHz Elevation 7°



915 MHz Azimuth



915 MHz Elevation 7°

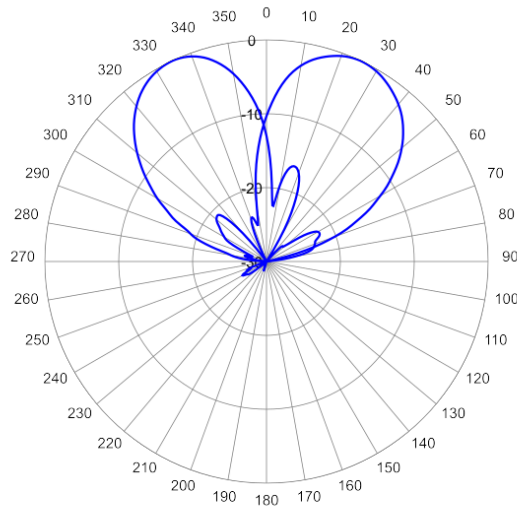


# Antennas

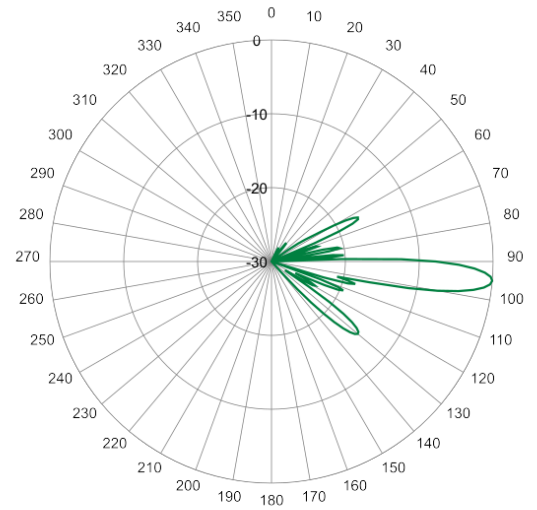
SPECIFICATIONS

Bi-Sector™ Antenna

BSA-M65R-DU-H6



1910 MHz Azimuth



1910 MHz Elevation 5°



# Antennas

ORDERING

Bi-Sector™ Antenna

BSA-M65R-DU-H6

Parts & Accessories

<b>BSA-M65R-DU-H6</b>	6 Foot (1.8 m) Bi-Sector™ Array, Multi-Band Antenna with 4 factory installed RET Actuators
<b>BSA-M65V-DU-H6</b>	6 Foot (1.8 m) Bi-Sector™ Array, Multi-Band Antenna, Variable Electrical Tilt with 4 factory installed knobs
<b>BSA-M65R-DU-H6-K</b>	Complete Kit with Antenna, Factory Installed Actuators (4) and MBK-01 Mounting Bracket
<b>BSA-M65V-DU-H6-K</b>	Complete Kit with Antenna, manual Variable Electrical Tilt (4) and MBK-01 Mounting Bracket
<b>MBK-01</b>	Mounting bracket kit (top and bottom) with 0° to 10° mechanical tilt adjustment
<b>BSA-RET200</b>	Remote electrical tilt actuator
<b>OPA-CBK-AG-RRU</b>	4 RET antenna to RRU AISG cable kit
<b>OPA-CBK-RA-AG-RRU</b>	4 RET antenna to RRU AISG right angle cable kit



# Antennas

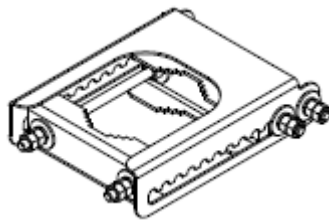
ACCESSORIES

## Mounting Bracket Kit

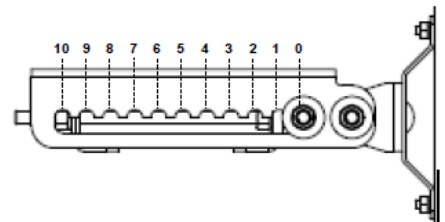
MBK-01

Mechanical

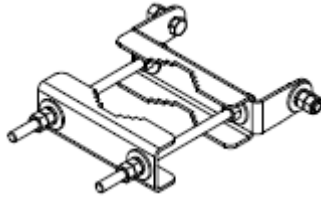
<b>Weight</b>	12.6 lbs (5.7 kg)
<b>Hinge Pitch</b>	47.25 in (1200 mm)
<b>Mounting Pole Dimension</b>	2 to 5 in (5 to 12 cm)
<b>Fastener Size</b>	M12
<b>Installation Torque</b>	40 ft·lb (54 N·m)
<b>Mechanical Tilt Adjustment</b>	0° - 10°



MBK-01 Top Adjustable Bracket



MBK-01 Top Adjustable Bracket Side View



MBK-01 Bottom Fixed Bracket



# Antennas

ACCESSORIES

## Remote Electrical Tilt Actuator (RET)

BSA-RET200

### General Specifications

<b>Part Number</b>	BSA-RET200
<b>Protocols</b>	AISG 2.0
<b>RET Type</b>	Type 1
<b>Adjustment Cycles</b>	>10,000 cycles
<b>Tilt Accuracy</b>	±0.1°
<b>Temperature Range</b>	-40° C to 70° C

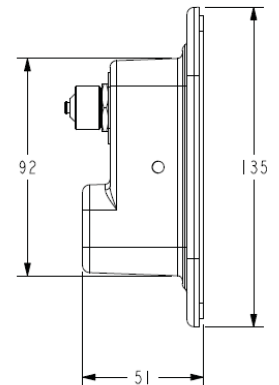
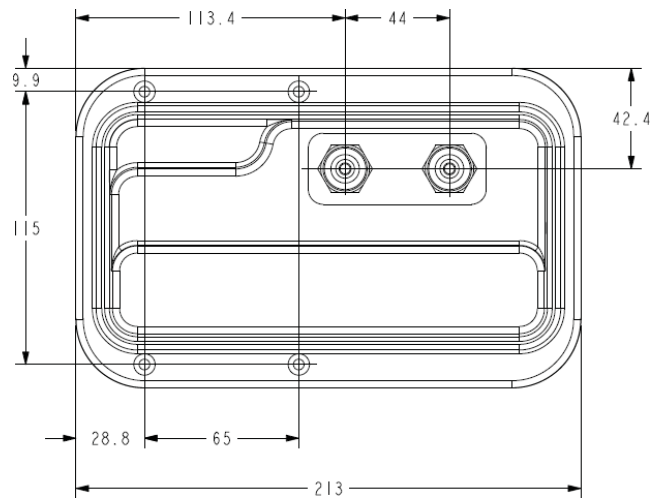
### Electrical

<b>Data Interface Signal</b>	DC
<b>Input Voltage</b>	10-30 Vdc
<b>Current Consumption Tilt</b>	120 mA at $V_{in}=24$
<b>Current Consumption Idle</b>	55 mA at $V_{in}=24$
<b>Hardware Interface</b>	AISG-RS 485 A/B
<b>Input Connector</b>	Male 1 × 8 pin Daisy Chain
<b>Output Connector</b>	Female 1 × 8 pin Daisy Chain

### Mechanical

<b>Dimensions (LxWxD)</b>	8.0x5.0x2.0 in. (213x135x51 mm)
<b>Housing</b>	ASA/ABS/Aluminum
<b>Weight</b>	1.7 lbs (0.75 kg)

ASA= Acrylic Styrene Acrylonitrile  
ABS=Acrylonitrile Butadiene Styrene







# Antennas

ACCESSORIES

AISG Cable Kit

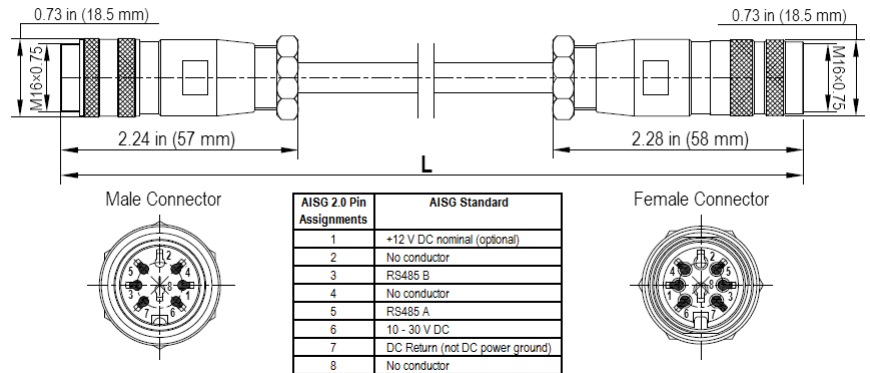
OPA-CBK-AG-RRU

## Electrical Specifications

<b>Individual Cable Part Number</b>	AISGC-M-F-18	AISGC-M-F-10FT
<b>Cable style</b>	UL2464	UL2464
<b>Protocol</b>	AISG 1.1 and AISG 2.0	AISG 1.1 and AISG 2.0
<b>Maximum voltage</b>	300 V	300 V
<b>Rated current</b>	5 A at 104° F (40° C)	5 A at 104° F (40° C)

## Mechanical Specifications

<b>Individual Cable Part Number</b>	AISGC-M-F-18	AISGC-M-F-10FT
<b>Cables per kit</b>	3	2
<b>Connectors</b>	2 x 8 pin IEC 60130-9 Straight male/straight female	2 x 8 pin IEC 60130-9 Straight male/straight female
<b>Tightening torque</b>	Hand tighten only $\approx$ 1.84 ft-lbs (2.5 N-m)	Hand tighten only $\approx$ 1.84 ft-lbs (2.5 N-m)
<b>Construction</b>	Shielded (Tinned Copper Braid)	Shielded (Tinned Copper Braid)
<b>Braid coverage</b>	85%	85%
<b>Jacket Material</b>	Matte Polyurethane (Black)	Matte Polyurethane (Black)
<b>Conductors</b>	1 twisted pair - 24 AWG 3 conductors - 19 AWG AWM style 2464	1 twisted pair - 24 AWG 3 conductors - 19 AWG AWM style 2464
<b>Cable Diameter</b>	0.307 in (7.8 mm)	0.307 in (7.8 mm)
<b>Length</b>	18 - 20 in (457 - 508 mm)	120 in (3048 mm)
<b>Weight</b>	0.27 lbs (0.12 kg)	0.69 lbs (.31 kg)
<b>Minimum bend radius</b>	3.9 in (100 mm)	3.9 in (100 mm)



AISG-Male to AISG-Female Jumper Cable

## Environmental Specifications

<b>Individual Cable Part Number</b>	AISGC-M-F-18	AISGC-M-F-10FT
<b>Temperature Range</b>	-40° to 80° C	-40° to 80° C
<b>Flammability</b>	UL 1581 VW-1	UL 1581 VW-1
<b>Ingress Protection</b>	IEC 60529:2001, IP67	IEC 60529:2001, IP67



# Antennas

ACCESSORIES

AISG Cable Kit

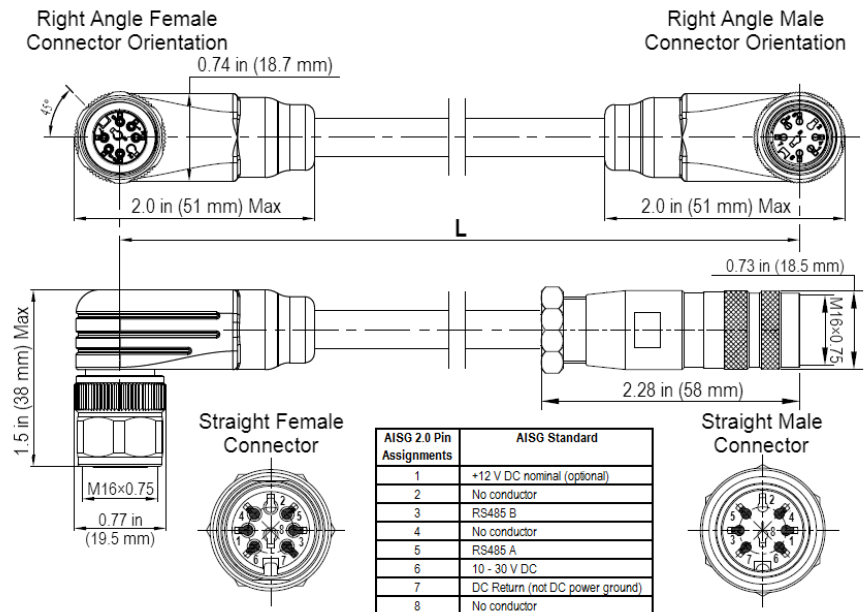
OPA-CBK-RA-AG-RRU

## Electrical Specifications

<b>Individual Cable Part Number</b>	AISGC-MRA-FRA-20	AISGC-M-FRA-10FT
<b>Cable style</b>	UL2464	UL2464
<b>Protocol</b>	AISG 1.1 and AISG 2.0	AISG 1.1 and AISG 2.0
<b>Maximum voltage</b>	300 V	300 V
<b>Rated current</b>	5 A at 104° F (40° C)	5 A at 104° F (40° C)

## Mechanical Specifications

<b>Individual Cable Part Number</b>	AISGC-MRA-FRA-20	AISGC-M-FRA-10FT
<b>Cables per kit</b>	3	2
<b>Connectors</b>	2 x 8 pin IEC 60130-9 Right angle male/right angle female	2 x 8 pin IEC 60130-9 Straight male/right angle female
<b>Tightening torque</b>	Hand tighten only $\approx$ 1.84 ft-lbs (2.5 N-m)	Hand tighten only $\approx$ 1.84 ft-lbs (2.5 N-m)
<b>Construction</b>	Shielded (Tinned Copper Braid)	Shielded (Tinned Copper Braid)
<b>Braid coverage</b>	85%	85%
<b>Jacket Material</b>	Matte Polyurethane (Black)	Matte Polyurethane (Black)
<b>Conductors</b>	1 twisted pair - 24 AWG 3 conductors - 19 AWG AWM style 2464	1 twisted pair - 24 AWG 3 conductors - 19 AWG AWM style 2464
<b>Cable Diameter</b>	0.307 in (7.8 mm)	0.307 in (7.8 mm)
<b>Length</b>	20 in (508 mm)	120 in (3048 mm)
<b>Weight</b>	0.23 lbs (0.10 kg)	0.77 lbs (0.35 kg)
<b>Minimum bend radius</b>	3.9 in (100 mm)	3.9 in (100 mm)



Right Angle to Right Angle and Right Angle to Straight Jumper Cable



# Antennas

ACCESSORIES

AISG Cable Kit

OPA-CBK-RA-AG-RRU

## Environmental Specifications

<b>Individual Cable Part Number</b>	AISGC-MRA-FRA-20	AISGC-M-FRA-10FT
<b>Temperature Range</b>	-40° to 80° C	-40° to 80° C
<b>Flammability</b>	UL 1581 VW-1	UL 1581 VW-1
<b>Ingress Protection</b>	IEC 60529:2001, IP67	IEC 60529:2001, IP67



# Antennas

## Bi-Sector™ Antenna

BSA-M65R-DU-H6

### STANDARDS & CERTIFICATIONS

#### Standards & Compliance

<b>Safety</b>	EN 60950-1, UL 60950-1
<b>Emission</b>	EN 55022
<b>Immunity</b>	EN 55024
<b>Environmental</b>	IEC 60068-2-1, IEC 60068-2-2, IEC 60068-2-5, IEC 60068-2-6, IEC-60068-2-11, IEC 60068-2-14, IEC 60068-2-18, IEC 60068-2-27, IEC 60068-2-29, IEC 60068-02-30, IEC 60068-2-52, IEC 60068-2-64, GR-63-CORE 4.3.1, EN 60529, IP 24

#### Certifications

Antenna Interface Standards Group (AISG), Federal Communication Commission (FCC) Part 15 Class B, CE, CSA US, ISO 9001

