



Antennas

DATA SHEET

Triple Mount Cluster Bracket

TM-02



- This two part antenna mounting bracket is designed to support up to 3 CCI Multiport Panel Antennas clamped to a single mounting pole
- Triple Mount Cluster Bracket kit has fixed tilt brackets
- The Triple Mount Cluster Bracket Kit is designed for use with antenna 14C65R-BUH5A and 16C65R-BUH8A
- For stealth/flagpole installations, 3 mounted Antennas will fit inside an outer tube with inside measurements of Ø24 inch (609.6 mm)
- Rugged and weather resistant design
- Custom clamps fit only a Ø4 inch (Ø101.6 mm) pole

Overview

This fixed tilt Triple Mount Cluster Bracket kit is designed for use with up to 3 CCI Cluster 14C65R-BUH5A and 16C65R-BUH8A Antennas's. The Triple Mount Cluster Bracket Kit is for pole diameters of 4.0 inches (101.6 mm).

CCI antenna brackets are designed and produced to ISO 9001 certification standards for reliability and quality in our state-of-the-art manufacturing facilities.

Applications

- Ideal for pole mounting in urban settings
- When space is a premium up to 3 sectors of antennas can be deployed on a single pole



Antennas

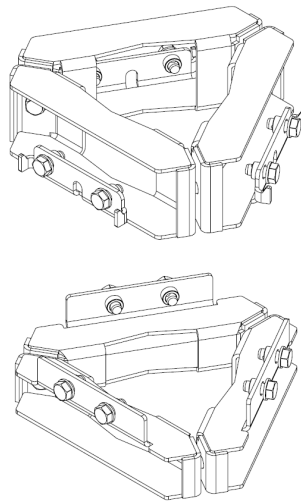
SPECIFICATIONS

Triple Mount Cluster Bracket

TM-02

Mechanical

Weight	6.6 lbs (3.0 kg)
Fastener Size	M8
Installation Torque	15 ft·lb (20 N·m)
Cluster Bracket Pitch (Vertical)	66.2 in (1681 mm) for 14C65R-BUH5A and 102.5 in (2604 mm) for 16C65R-BUH8A
Mechanical Tilt Adjustment	None



TM-02 Bracket



TM-02 Mounting Brackets (on 4" Pole)



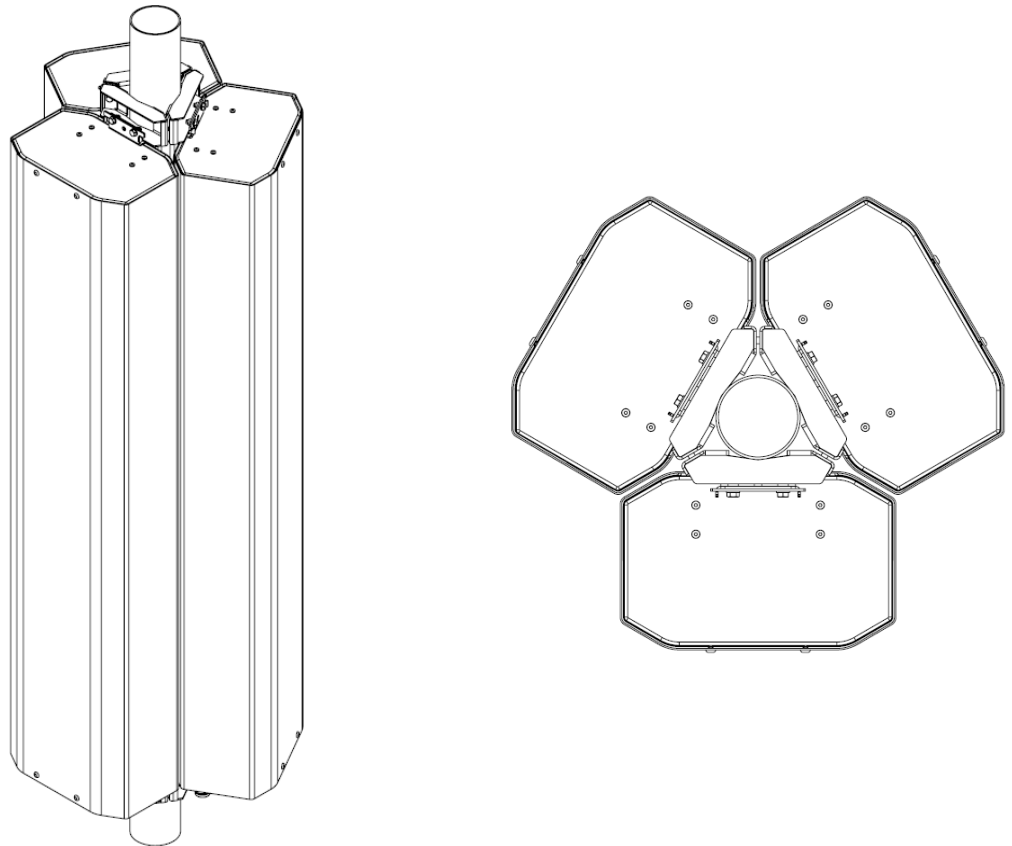
Antennas

SPECIFICATIONS

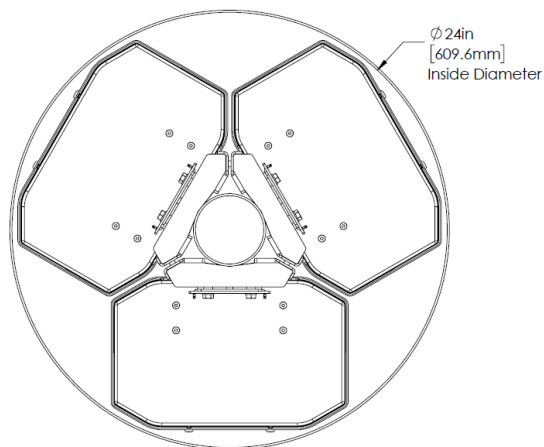
Triple Mount Cluster Bracket

TM-02

Mechanical



3 - 65° Antennas Mounted on Pole using TM-02 Brackets (ISO and Top Views)



3 - 65° Antennas Mounted on Pole inside 24" radome



Antennas

ORDERING

Triple Mount Cluster Bracket

TM-02

Parts & Accessories

Model number TM-02

Overall Weight 6.6 lbs (3.0 kg)