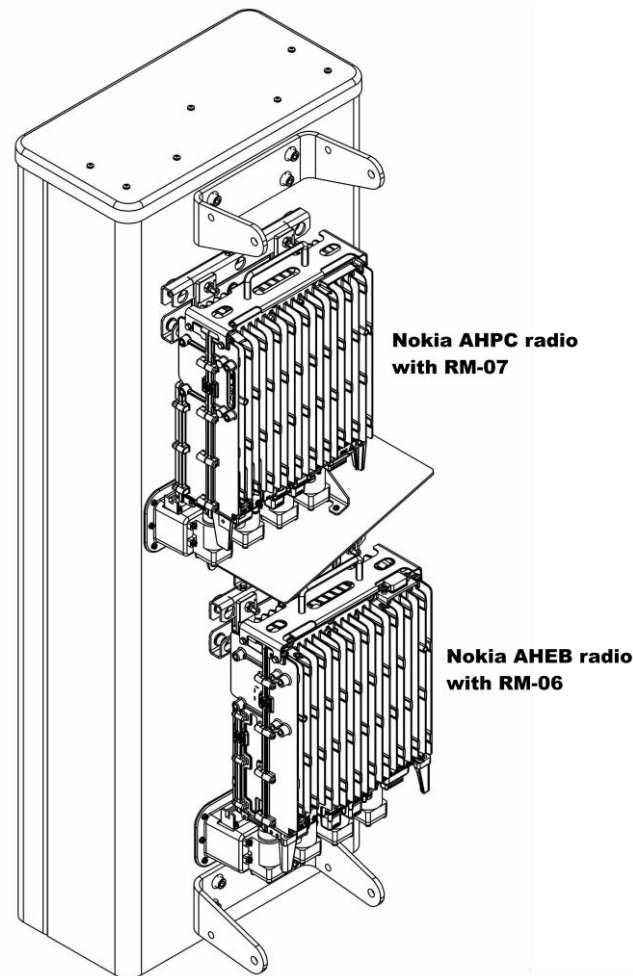


Nokia Radio Unit (RU) Assembly Installation Guide



The installation, maintenance, or removal of an antenna requires qualified, experienced personnel. The installer must refer to the appropriate local safety codes and ensure proper electrical and electromagnetic compatibility before proceeding with the installation. All local codes shall take precedence over information in this document. Antenna systems should be inspected once a year by qualified personnel to verify proper installation, maintenance, and condition of equipment. Communication Components Antennas Inc. disclaims any liability or responsibility for the results of improper or unsafe installation.

Nokia Radio Unit (RU) Assembly Installation Guide

Note: RU installation starts with the lower unit, (AHEB) equipment with RM-06 installed. Mounting kit and pole removed for clarity from all images in this document.

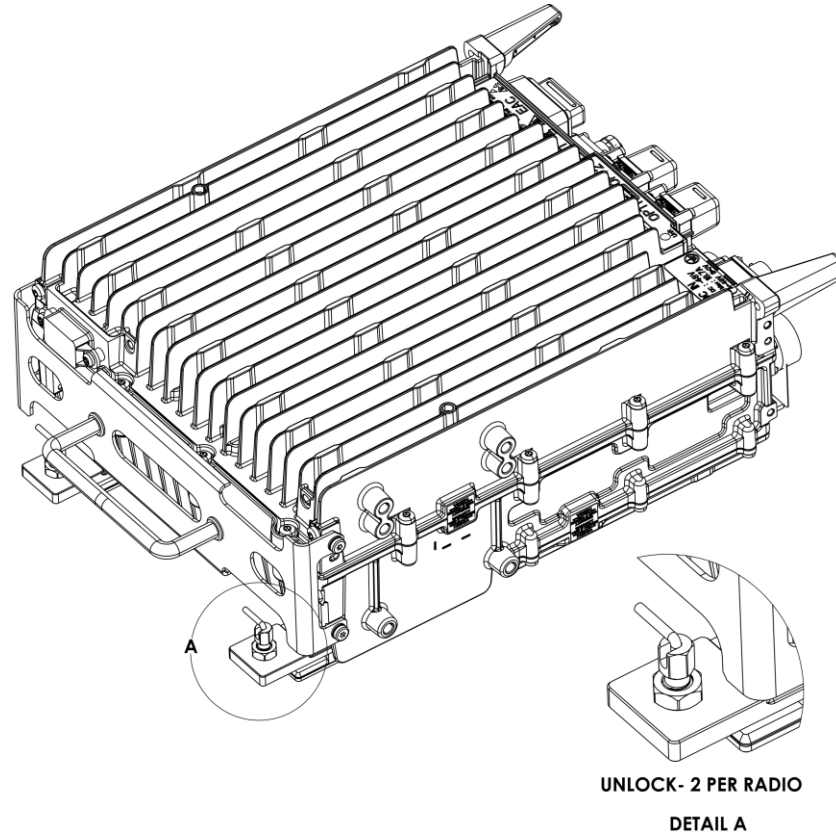


Fig. 1: AHEB RU Preparation

Step	Task
1	Lift and turn both locking pins to the unlocked position as shown in Fig 1, detail A.

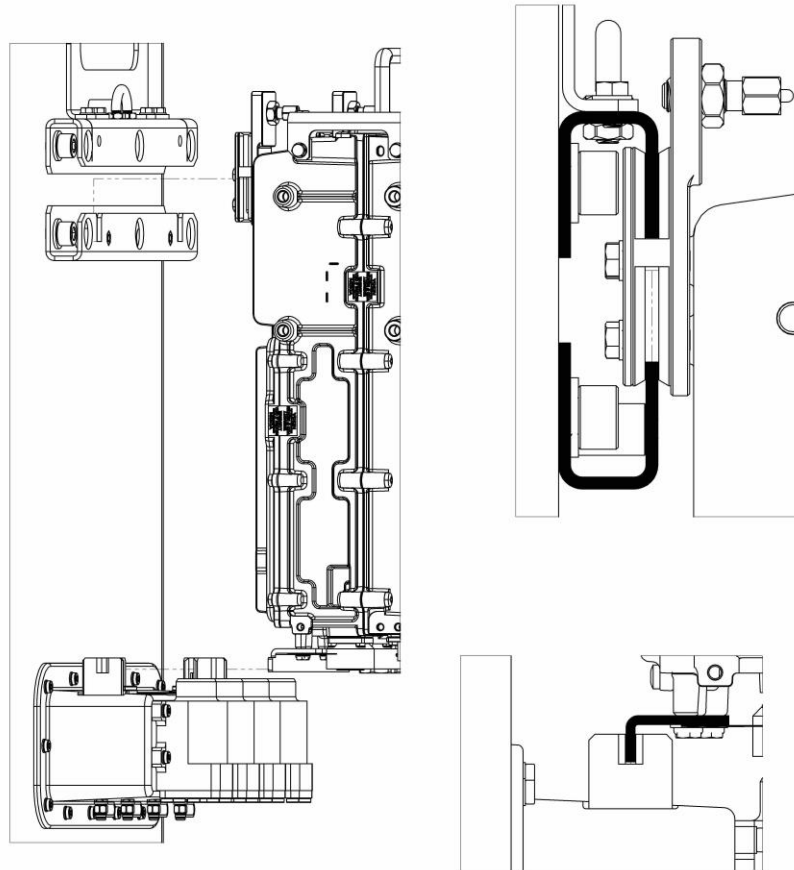


Fig. 2: RU aligned to antenna rails

Step	Task
2	Align RU with rails and supports. (Note: RU's can be installed from left or right side of the antenna)

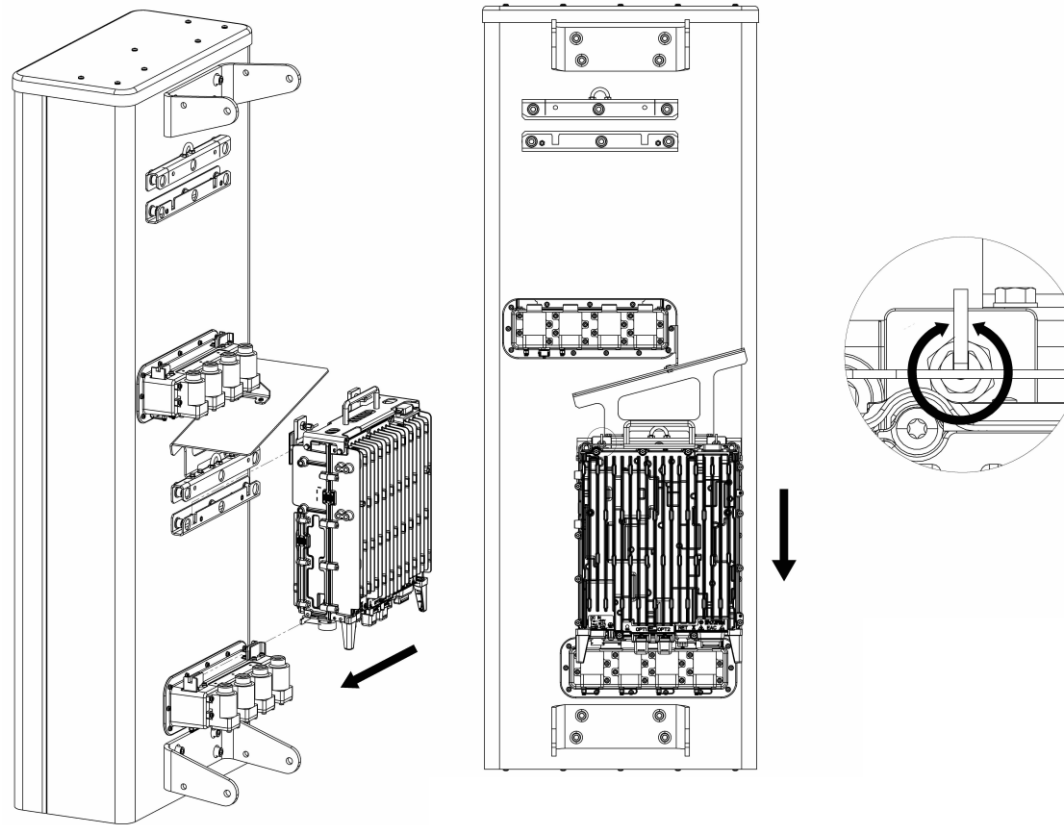


Fig. 3: Installation of RU onto the Antenna Bracket

Step	Task
3	Install RU onto the guide rails and supports and slide the RU into position over the blind mate connectors until it drops vertically, indicating that the RU is in correct position to be locked. Turn locking pin handle as shown in Fig 3 detail. (Note: RU can be installed from left or right side of the antenna)

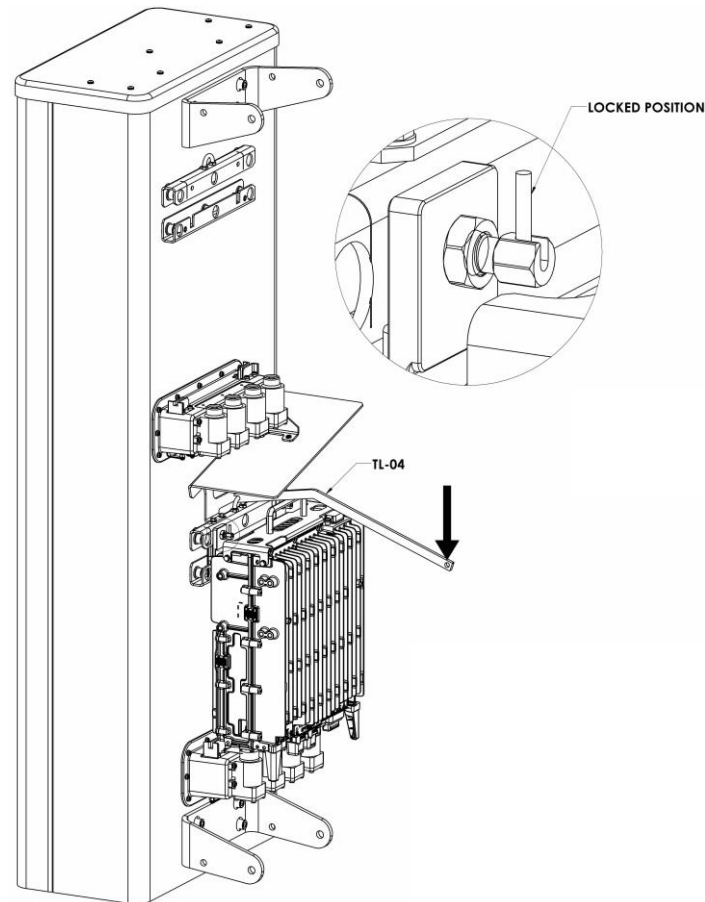


Fig. 4: Locking RU in Position

Step	Task
4	Using tool (TL-04) as shown, push down gently unit both spring lock snap into the locked position as shown in Fig 4 detail.

Note: RU installation continues with the upper unit, (AHPC) equipment with RM-07 installed.

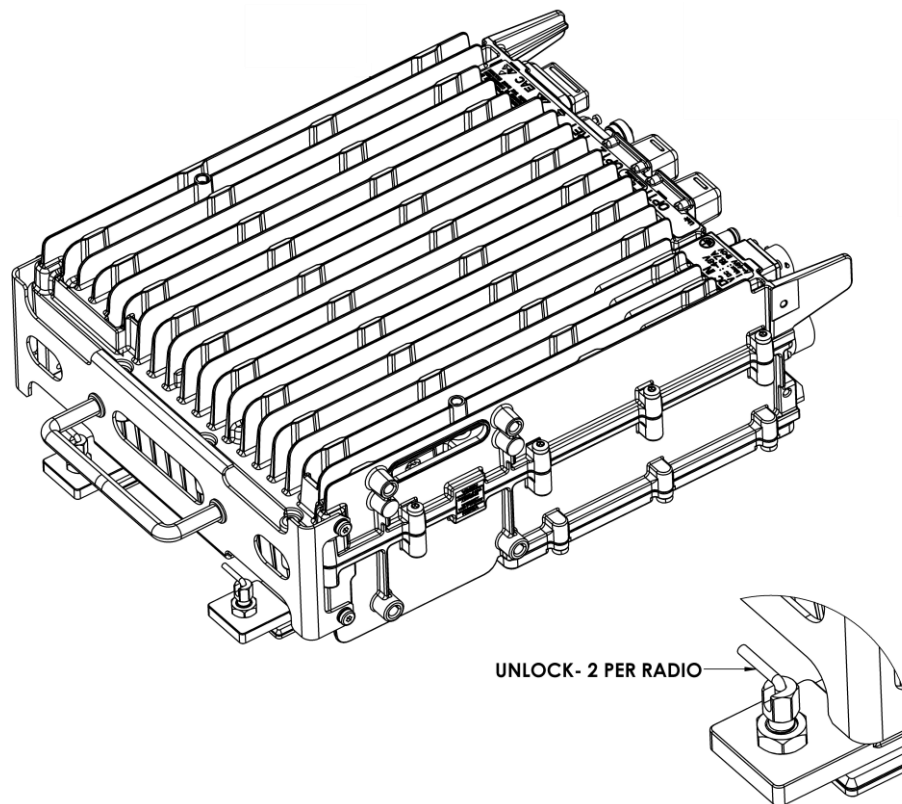


Fig. 5: AHPC RU Preparation

Step	Task
5	Lift and turn both locking pins to the unlocked position as shown in Fig 5 detail above.

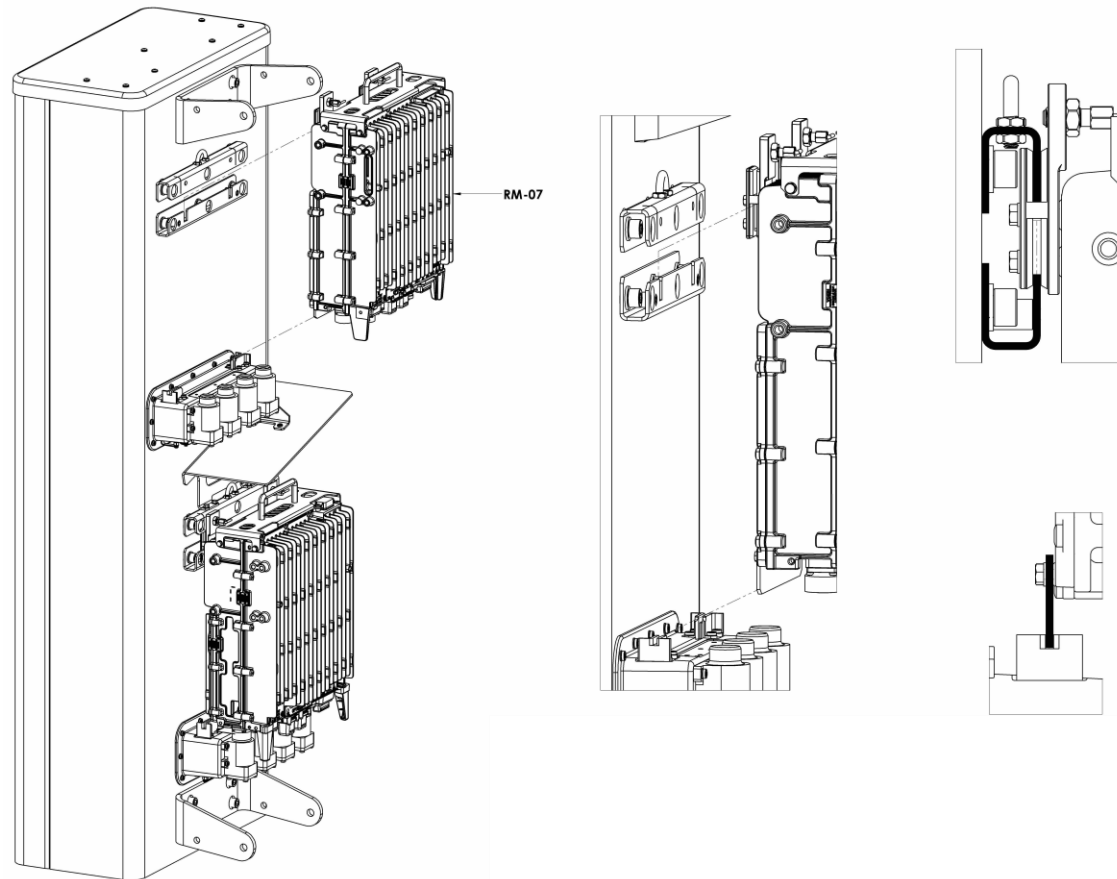
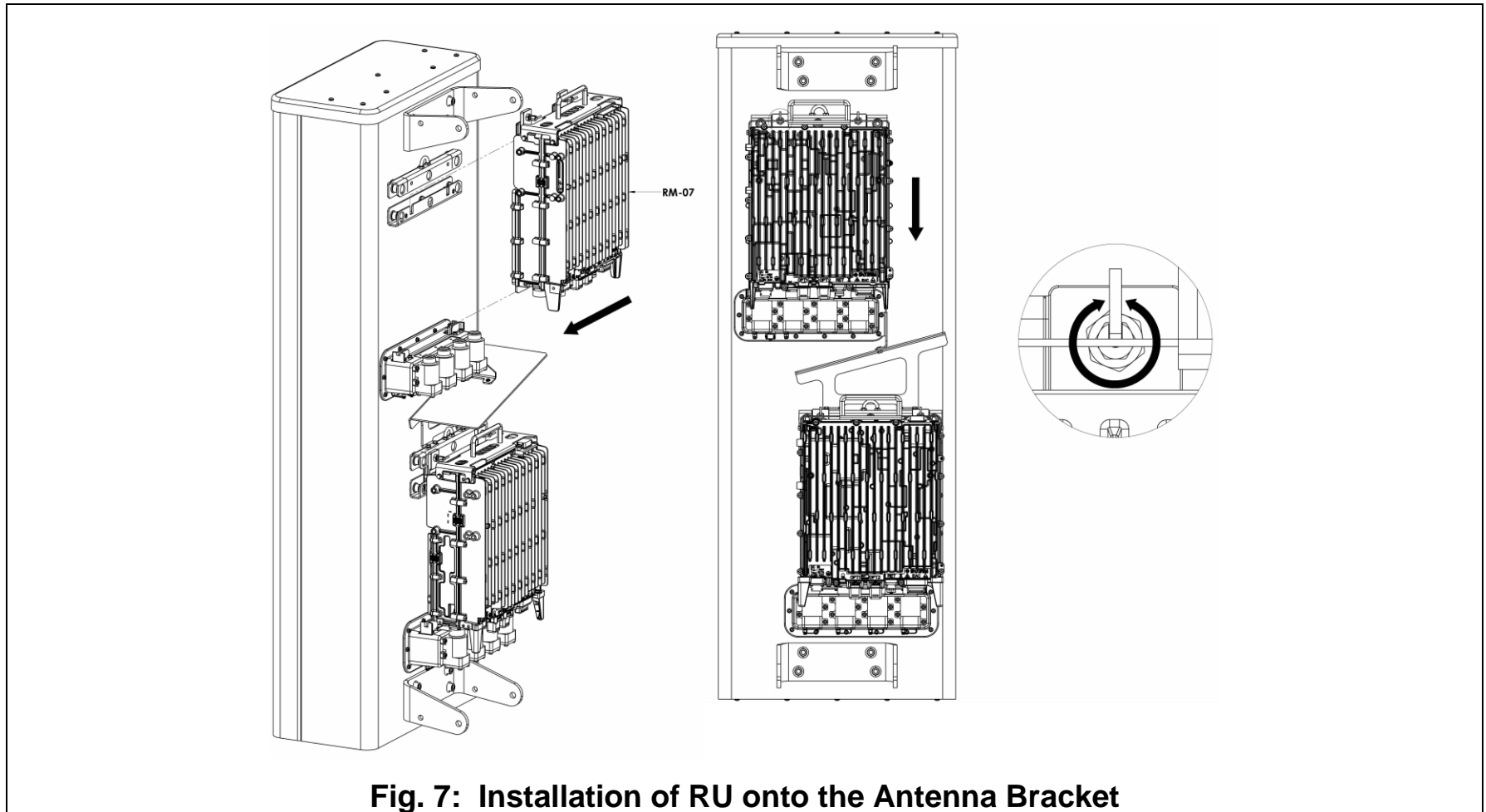


Fig. 6: RU aligned to antenna rails

Step	Task
6	Align the RU with rails and supports. (Note: RU can be installed from left or right side of the antenna)



Step	Task
7	Install RU onto the guide rails and supports and slide the RU into position over the blind mate connectors until it drops vertically, indicating that the RU is in correct position to be locked. Turn locking pin handle as shown in Fig 7 detail. (Note: RU can be installed from left or right side of the antenna)

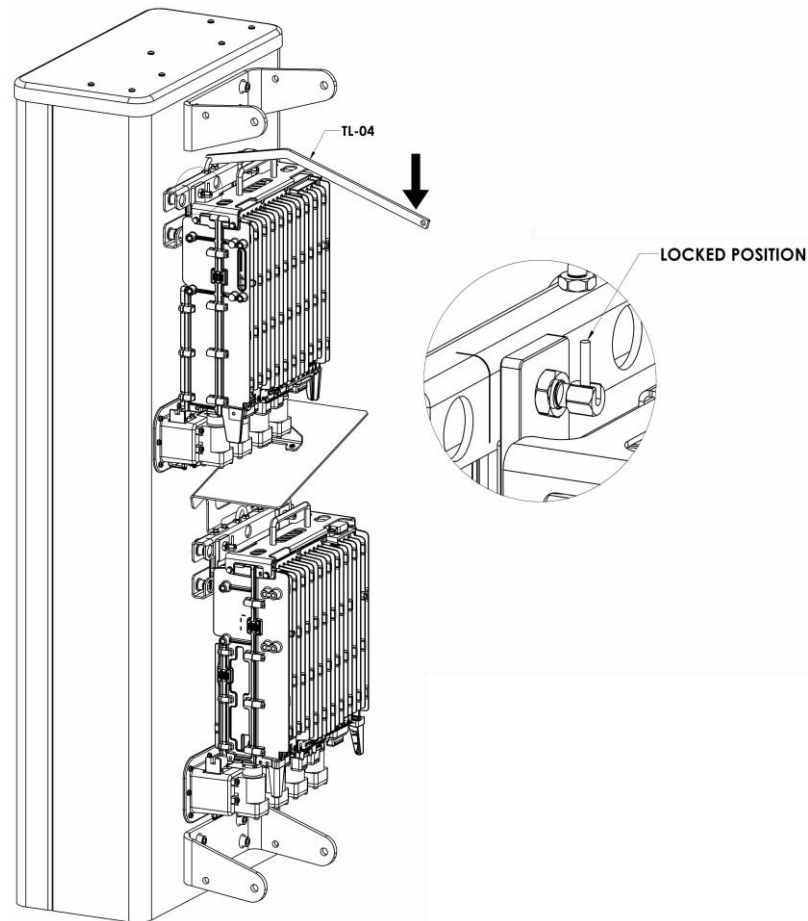


Fig. 8: Locking RU in Position

Step	Task
8	Using tool (TL-04) as shown, push down gently unit both spring locks snap into the locked position as shown in Fig 8 in detail.

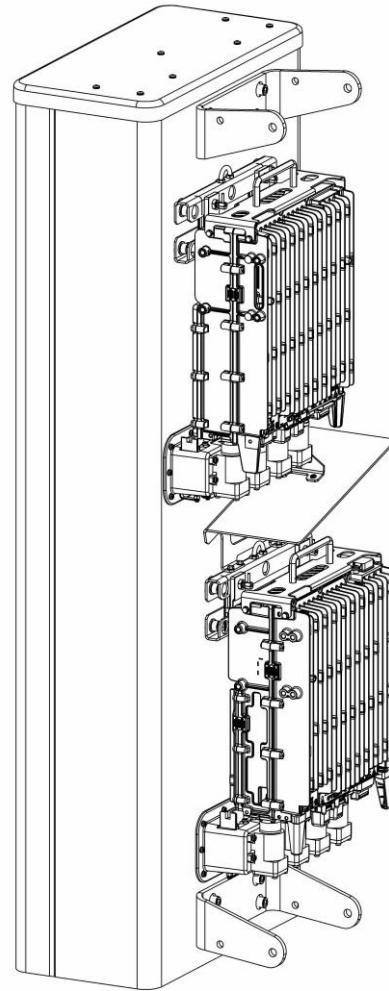


Fig. 9: Final Installation View

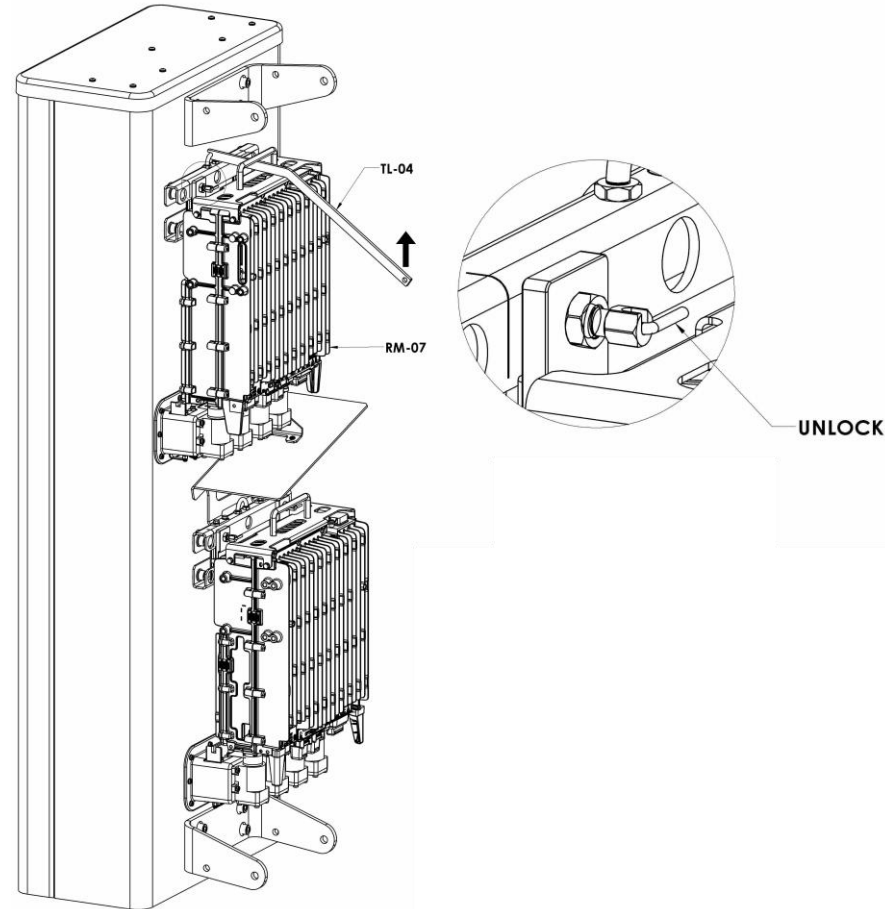


Fig. 10: RU Unlocking View

RU removed process is the same for both lower and upper units.

Step	Task
9	Pull and turn locking pins as showing in Fig 10 detail and using tool (TL-04) as shown, lift RU away from connector bucket assembly.

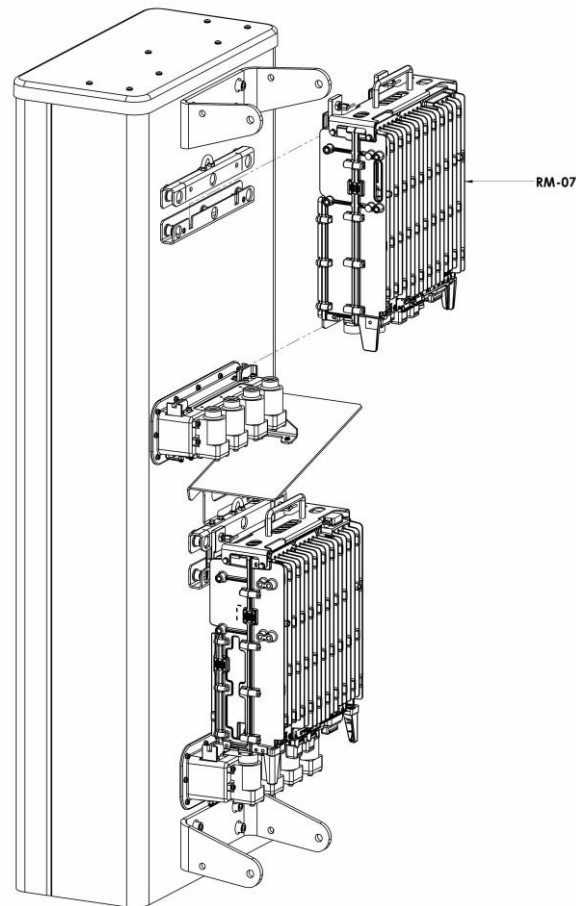


Fig. 11: RU Removal

Step	Task
10	While lifting the RU towards the antenna top, slide RU either to the left or right for full removal.