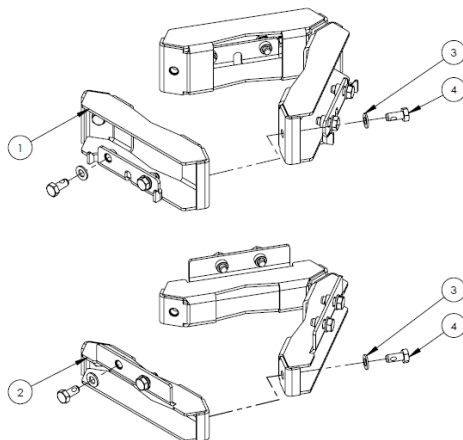


### DISCLAIMER:

The installation, maintenance, or removal of an antenna requires qualified, experienced personnel. You must refer to the appropriate local safety codes and ensure proper electrical and electromagnetic compatibility before proceeding with the installation. All local codes shall take precedence over information in this document. Antenna systems should be inspected once a year by qualified personnel to verify proper installation, maintenance, and condition of equipment. Communication Components Antennas Inc. disclaims any liability or responsibility for the results of improper or unsafe installation.

**Fig. 1: Triple Mount Mast Bracket BOM**

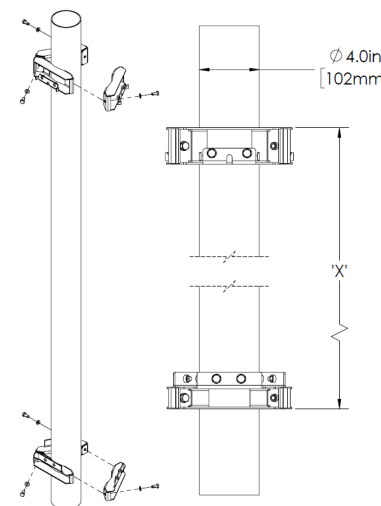


ITEM	QTY	DESCRIPTION
1	3	MAST BRACKET, CLAMP, TRIPLE MOUNT TOP, TM-02
2	3	MAST BRACKET, CLAMP, TRIPLE MOUNT BOTTOM, TM-02
3	18	WASHER, M8, FL, SS
4	18	HEX CAP BOLT, M8X1.25X18 L, DIN 933-A2, SS, NYLOCK

**Step Task**

- See Fig. 1 for the Triple Mount Mast Bracket (TM-02) BOM. The TM-02 is to be installed only on a Ø4.0 in (102 mm) mast.
- Clamp the three Top Mast Bracket Clamps (item #1) around the mast using three Washers (item #3) and three Bolts (item #4) as shown in Fig. 2. Finger tighten all three bolts. Rotate the Clamps on the mast so they are orientated in the specified antenna directions and torque the Bolts to 14.7 ft-lbs (20 N·m).

**Fig. 2: Triple Mount Mast Bracket Spacing**



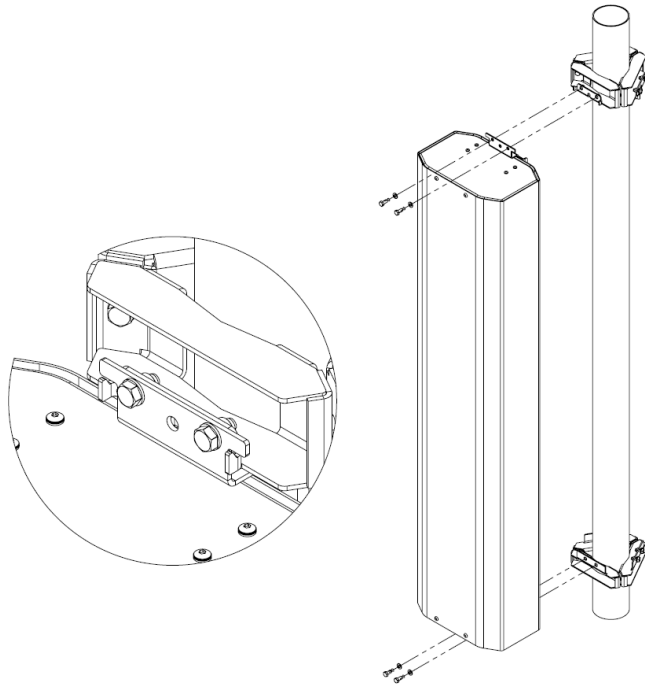
**Triple Mount Mast Bracket Spacing**

ANTENNA	'X' in	'X' mm
14C65R-BUH5A	66.2	1681
16C65R-BUH8A	102.5	2604

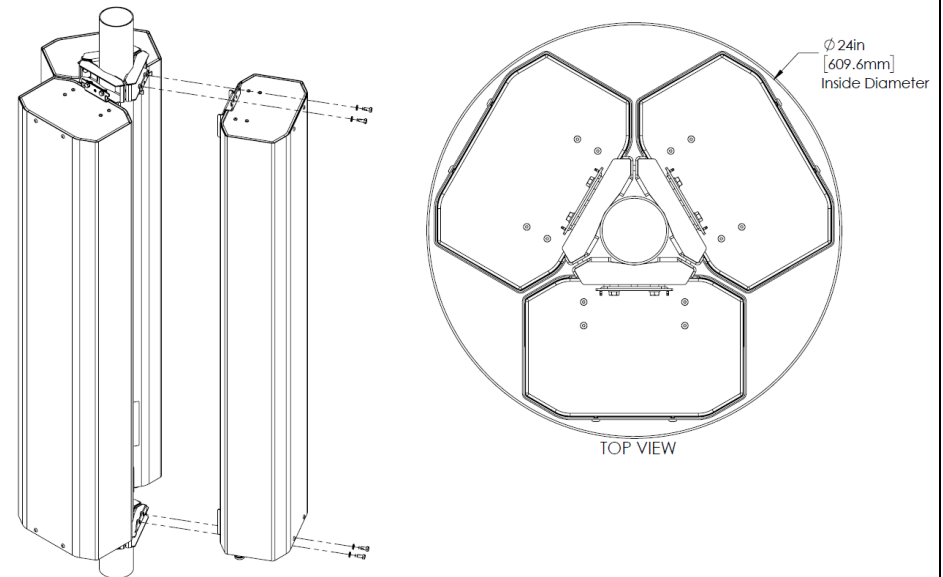
**Step Task**

- Clamp the three Bottom Mast Bracket Clamps (item #2) around the mast using three Washers (item #3) and three Bolts (item #4) as shown in Fig. 2. Finger tighten all three bolts. Align the Bottom Mast Bracket Clamps to the Top Mast Bracket Clamps. Based on the antenna being installed, space the Mast Bracket Clamps 'X' apart as shown in Fig. 2. Torque the Bolts to 14.7 ft-lbs (20 N·m).

**Fig. 3: Single Antenna Mounting**



**Fig. 4: Three Antenna Mounting**



Step	Task
4	Hang the top of the Antenna over the hooks of the Top Mast Bracket Clamp as shown in Fig. 3. Secure the Antenna using four Washers (item #3) and four Bolts (item #4) as shown in Fig. 3 and torque the Bolts to 14.7 ft·lbs (20 N·m).
5	Hang and secure the additional antennas using four Washers (item #3) and four Bolts (item #4) per antenna as shown in Fig. 4. Torque the Bolts to 14.7 ft·lbs (20 N·m). Three antenna fit inside a Ø24 in (609.6 mm) inside diameter tube.